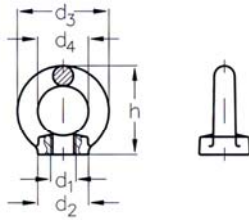


# ACCESSOIRES

**Anneau de saisissage INOX**  
filetage à droite

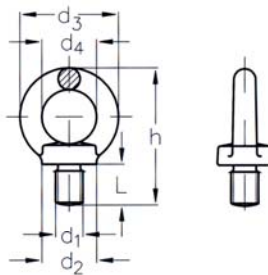
**NIRO Eye nut**  
right hand thread



Désignation nominal size	d <sub>1</sub>	d <sub>2</sub> mm	d <sub>3</sub> mm	d <sub>4</sub> mm	h mm	N° article stock no.
M 6	M 6	15	26,5	15	27	308 111 006
M 8	M 8	20	36	20	36	308 111 008
M 10	M 10	25	45	25	45	308 111 010
M 12	M 12	30	54	30	53	308 111 012
M 16	M 16	35	63	35	62	308 111 016
M 20	M 20	40	72	40	71	308 111 020
M 24	M 24	50	89	50	90	308 111 024
M 30	M 30	60	107	60	109	308 111 030

**Anneau de levage INOX**  
filetage à droite

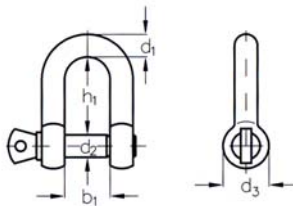
**NIRO Eye bolt**  
right hand thread



Désignation nominal size	d <sub>1</sub>	d <sub>2</sub> mm	d <sub>3</sub> mm	d <sub>4</sub> mm	L mm	h mm	N° article stock no.
M 6	M 6	15	26,5	15	10	37	308 110 006
M 8	M 8	20	36	20	13	49	308 110 008
M 10	M 10	25	45	25	17	62	308 110 010
M 12	M 12	30	54	30	20,5	73	308 110 012
M 16	M 16	35	63	35	26	90	308 110 016
M 20	M 20	40	72	40	30	101	308 110 020
M 24	M 24	50	89	50	35	125	308 110 024
M 30	M 30	60	107	60	45	132	308 110 030

**Manille INOX droite**

**NIRO Shackle, U-type**



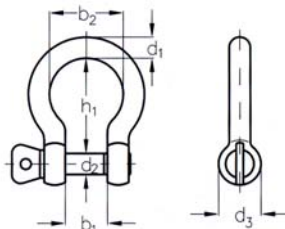
Désignation nominal size	Rupture * breaking load * kg	d <sub>1</sub> mm	d <sub>2</sub> mm	d <sub>3</sub> mm	b <sub>1</sub> mm	h <sub>1</sub> mm	N° article stock no.
5	1200	5	5	10	10	17	308 400 005
6	1500	6	6	12	12	21	308 400 006
8	2500	8	8	16	16	28	308 400 008
10	4500	10	10	19	19	35	308 400 010
12	6000	11	12	24	23	41	308 400 012
13	7000	13	13	26	26	45	308 400 013
16	8000	15	16	32	31	55	308 400 016
19	12000	18	19	38	38	66	308 400 019
22	15000	21	22	44	45	76	308 400 022
25	18000	24	25	50	50	87	308 400 025

\* Attention : ne pas confondre charge de rupture et charge utile.

\* Please note that the above figures are breaking load limits and not working load limits.

**Manille INOX lyre**

**NIRO Shackle, anchor type**



Désignation nominal size	Rupture * breaking load * kg	d <sub>1</sub> mm	d <sub>2</sub> mm	d <sub>3</sub> mm	b <sub>1</sub> mm	b <sub>2</sub> mm	h <sub>1</sub> mm	N° article stock no.
4	500	4	4	8	8	14	18	308 300 004
5	1000	5	5	10	10	18	23	308 300 005
6	1600	6	6	12	12	21	27	308 300 006
8	2800	8	8	16	15	28	37	308 300 008
10	4000	10	10	20	19	35	46	308 300 010
12	5000	12	12	24	24	42	55	308 300 012

\* Attention : ne pas confondre charge de rupture et charge utile.

\* Please note that the above figures are breaking load limits and not working load limits.